

Small character ink jet printer

KGK JET CCS-R

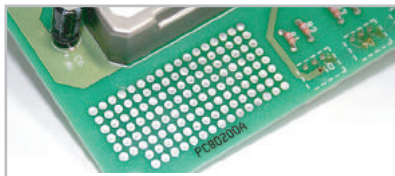


Stainless Steel Body

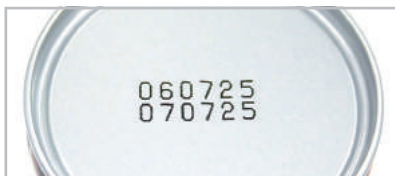
The body is made of robust stainless steel material. Thus, there is no worry about the operational environment where water is used.

You can operate the equipment in the wider environmental conditions.

- This machine can be operational under the temperature conditions between 0 and 40 degrees C thanks to the heater built in the printhead.
- You do not have to have an air compressor thanks to the use of the built in purging pump. There is no worry about the highly dusty environment to operate this machine.



Can print accurately even on the high precision equipment.



Prints printed on the aluminum can are kept from abrasion.

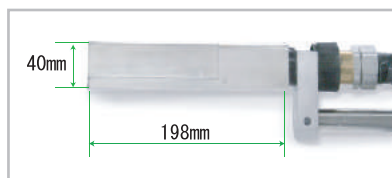


Can print on the glass material as well using the fast drying ink.



print-head, self-standing stand

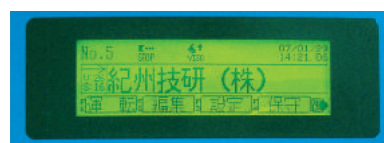
controller



head size

Easy to operate it as you see it.

- Ultimate functionality is considered in designing the key board.
- Input can be made easily just by checking printing data as the image is displayed on the screen.



The image to be produced from the printer can be displayed on the screen, thus processing such as editing can be made easily.

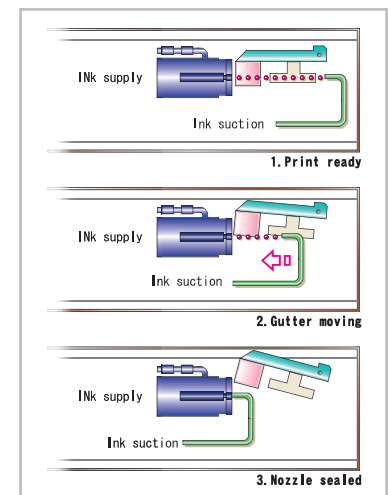
Printhead is closer to the substrate!

As the printhead has been designed to be so compact that printing on various shaped substrates has become possible. Another benefit is that the printhead can be mounted where there is only a small space.



Even a small printhead is equipped with full functionalities.

We have "Interval Mechanism" which automatically recirculate the ink even during non-operational time thus, it eliminates risk of nozzle blocking due to dried ink for the use after a long non-operational condition.



Automatic nozzle capping system.

Item	Specification
Printing Mode	Continuous (Charge Control System)
Character Height	1 to 10 mm
Print Speed	Max. 2666 characters/sec. (5 x 5 dot font and 1 character space. 40 μm Nozzle)
Ink Type	CN1black (500 ml) mild solution-based black ink CN5black-A1 (500 ml) MEK-based super-adhesive black ink CN505black (500 ml) Oil-resistant and super-adhesive black ink CN101black (500 ml) Fast drying black ink CP3black (500 ml) Pigment based black ink
Character Type	Alphabet (upper/lower cases), figures, symbols, Katakana and Hiragana, Chinese characters (JIS 1st and 2nd standard), user characters and simplified Chinese characters (GB2312)
Number of print line and dot constitution	1 to 4 steps : 5 x 5 dots 1 to 3 steps : 7 x 8 and 7 x 5 dots 1 to 2 steps : 12 x 10, 10 x 8, 9 x 9, and 9 x 7 dots 1 step : 24 x 24, 24 x 18, 16 x 16, and 16 x 12 dots
Font	Gothic(optional:Mincho)
Number of Registered Messages	50 messages max.
Date & time (expiration date) Print Functions	AD year,Japanese era name,year/date,day of week,time(12/24 schedule), annual serial date,annual serial week number,early/middle/late part of month(variable term setting), AM/PM and the replace-character function(replaces year,month,day,time,minute and second with different characters in single-digit)
Numbering Function	Max 8 digits, optional default value setting, up/down,carry(1 count can be set ranging from 1 to 9999 works), zero suppression function (replaces zeros in higher digits with spaces),numbering replace-character function (replaces with characters other than figures)
Communications Function	RS-232C 1ch, 76,800 bps max.
Head cable	3.5 m
Nozzle bore size	40 μm, 50 μm, 60 μm
Data Input	Full keyboard, RS-232C communications
User interface	Japanese, Chinese, English ※ Please note that there may be some languages not applicable depending on their fonts installed.
Outer shape dimensions	Main body : 674 mm in height x 450 mm in width x 300 mm in depth Print head : 40 mm in height x 40 mm in width x 199 mm in depth
Environmental conditions	0 to 40 °C, 10 to 80%RH (with no condensation)
Power supply	AV220V 50/60Hz 70W (100VA) AV230V 50/60Hz 70W (100VA)
Ground	Type D ground

■Optional Accessories

Phototube	Reflecting type/transmission type, cable length : 1 m min. to 30 m max.
Encoder set	5000 or 2000 pulse/rotation, cable length : 1 m min. to 30 m max.
Stand	Self-standing stand, mounting stand, table-top stand
Communication cable	Cross, cable length : 1 m min. to 15 m max.
Push button switch	Connectable to the phototube and usable for manual character verification

We reserve amend design and/or specifications without notice.



□Head Office:466,Nunohiki,Wakayama-shi,Wakayama 641-0015 Japan Tel:073-445-6610
□Tokyo Branch:3-41-13,Mukoujima,Sumida-ku,Tokyo,131-0013 Tel:03-3624-2111
□Sendai □Shizuoka □Nagoya □Osaka □Hiroshima □Fukuoka □Kainan T.C

<http://www.kishugiken.co.jp/>